

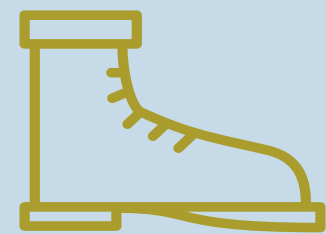
# Reducing Exposure to

# Common Pollutants

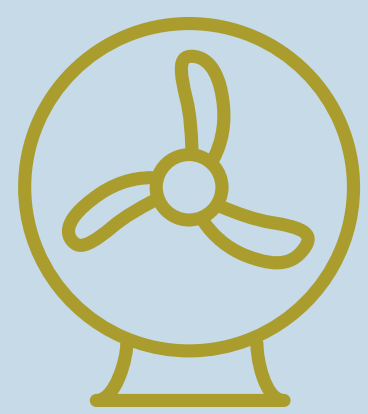
## Protect

Wear appropriate clothing when working with pesticides and household products.

- Masks
- Gloves
- Boots
- Long-sleeved shirt & pants



## Ventilate



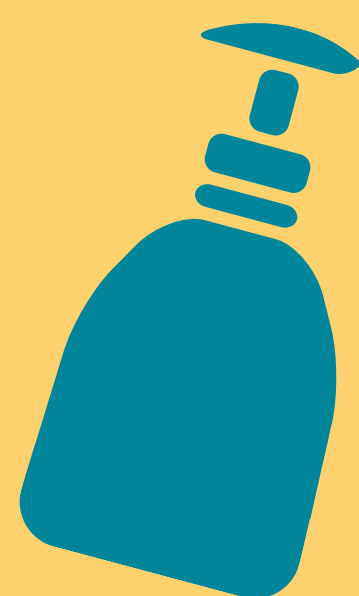
When appropriate, open windows or run fans

## Reduce



Personal Care Product use

Use alcohol-based hand sanitizers (no triclosan)



Couch purchased before **2004?**



Couch covers reduce exposure to flame retardants

## Avoid or Limit



Cigarettes and e-cigarettes

Second-hand smoke and vehicle exhaust; do not idle vehicles



Store household products and pesticides away from children and pets

Do not reuse product containers



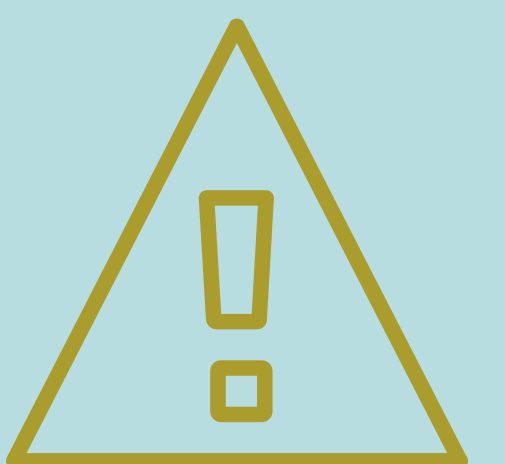
## Discard

Expired



- personal care products
- Paints, stains and dyes
- pesticides
- cleaning products

\*Follow appropriate guidelines with your waste manufacturer\*



## Replace

Where possible, replace old products with less toxic options.

<https://www.epa.gov/saferchoice>

Developed by the OSU Superfund Research Center

©2023. This work is licensed under a CC BY 4.0 license.



Oregon State University